

KRUESS Lab



A custom-made LIMS for your KRÜSS instruments

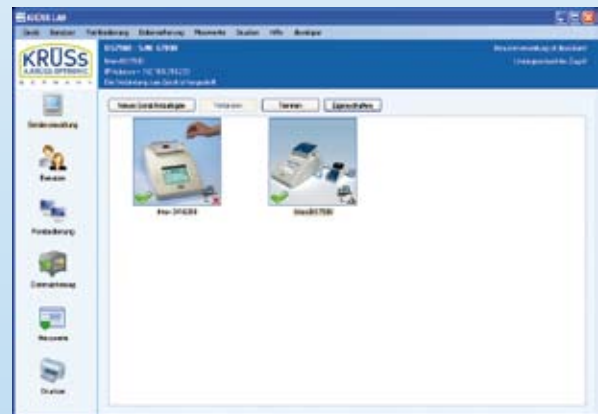
Our new KrüssLab software offers you ideal administration of your Krüss instruments: refractometers, polarimeters and density meters can now be comfortably remote-controlled. After an easy software installation via Windows Explorer, a set of function blocks provides administration, remote control and measurement reading from your central work station.

Your instrument can either be connected via an ethernet-cable to your intranet, or directly to your PC. It is identified via its personal IP-address. Our lab software reflects the intuitive touchscreen from your Krüss instrument, and it

can be run directly from your PC.

Your measurements are imported directly from the instrument, and remain stored locally in the database. In this way you can also work with your data when your Krüss instrument is turned off.

Using various data filters, you can export exactly the data needed in an excel or HTML file to your printer or as a pdf document. It's now possible to run an unlimited number of Krüss instruments centrally – your work is made easier and you will have a better overview of your processes.



KRÜSS LAB

Gerät Benutzer Fernbedienung Datensicherung Messwerte Drucken Hilfe developer

DS7500 - S/N: G7090

Mein DS7500
IP Adresse = 192.168.210.223
Die Verbindung zum Gerät ist hergestellt.

Benutzerverwaltung ist deaktiviert
Uneingeschränkter Zugriff

Neue Messwertdaten vom Gerät abholen Zurück Messwerte im Gerät löschen

Spalten auswählen Datenfilter Alles markieren Datenexport Daten löschen Liste aktualisieren

	Id	Datum	Benutzer	Methode	Probe	Messwert	Einheit
	1	01.01.2008	Administrator	Methode 01	10001	1,4306	mg/l
	2	02.01.2008 00:18	Administrator	Methode 01	10002	1,45143	mg/l
	3	03.01.2008 00:36	Administrator	Methode 01	10003	1,43241	mg/l
	4	04.01.2008 00:55	Administrator	Methode 01	10004	1,42675	mg/l
	5	05.01.2008 01:13	Administrator	Methode 01	10005	1,44219	mg/l
	6	06.01.2008 01:31	Administrator	Methode 01	10006	1,46482	mg/l
	7	07.01.2008 01:50	Administrator	Methode 01	10007	1,45473	mg/l
	8	08.01.2008 02:08	Administrator	Methode 01	10008	1,46201	mg/l
	9	09.01.2008 02:26	Administrator	Methode 01	10009	1,42411	mg/l
	10	10.01.2008 02:45	Administrator	Methode 01	10010	1,45535	mg/l
	11	11.01.2008 03:03	Administrator	Methode 01	10011	1,45349	mg/l
	12	12.01.2008 03:21	Administrator	Methode 01	10012	1,48737	mg/l
	13	13.01.2008 03:40	Administrator	Methode 01	10013	1,44592	mg/l
	14	14.01.2008 03:58	Administrator	Methode 01	10014	1,41371	mg/l
	15	15.01.2008 04:16	Administrator	Methode 01	10015	1,42712	mg/l
	16	16.01.2008 04:35	Administrator	Methode 01	10016	1,48847	mg/l
	17	17.01.2008 04:53	Administrator	Methode 01	10017	1,42696	mg/l
	18	18.01.2008 05:11	Administrator	Methode 01	10018	1,45598	mg/l
	19	19.01.2008 05:30	Administrator	Methode 01	10019	1,45457	mg/l
	20	20.01.2008 05:48	Administrator	Methode 01	10020	1,45089	mg/l

Geräteverwaltung
Benutzer
Fernbedienung
Datensicherung
Messwerte
Drucken